

PART OF THE NW.1/4 OF
SECTION 31, T.6N., R.1W., S.L.B.&M.

TAXING UNIT: 25

IN OGDEN CITY
SCALE 1" = 100'

SEE PAGE 50

SEE PAGE 37

SEE PAGE 46

1100 WEST STREET

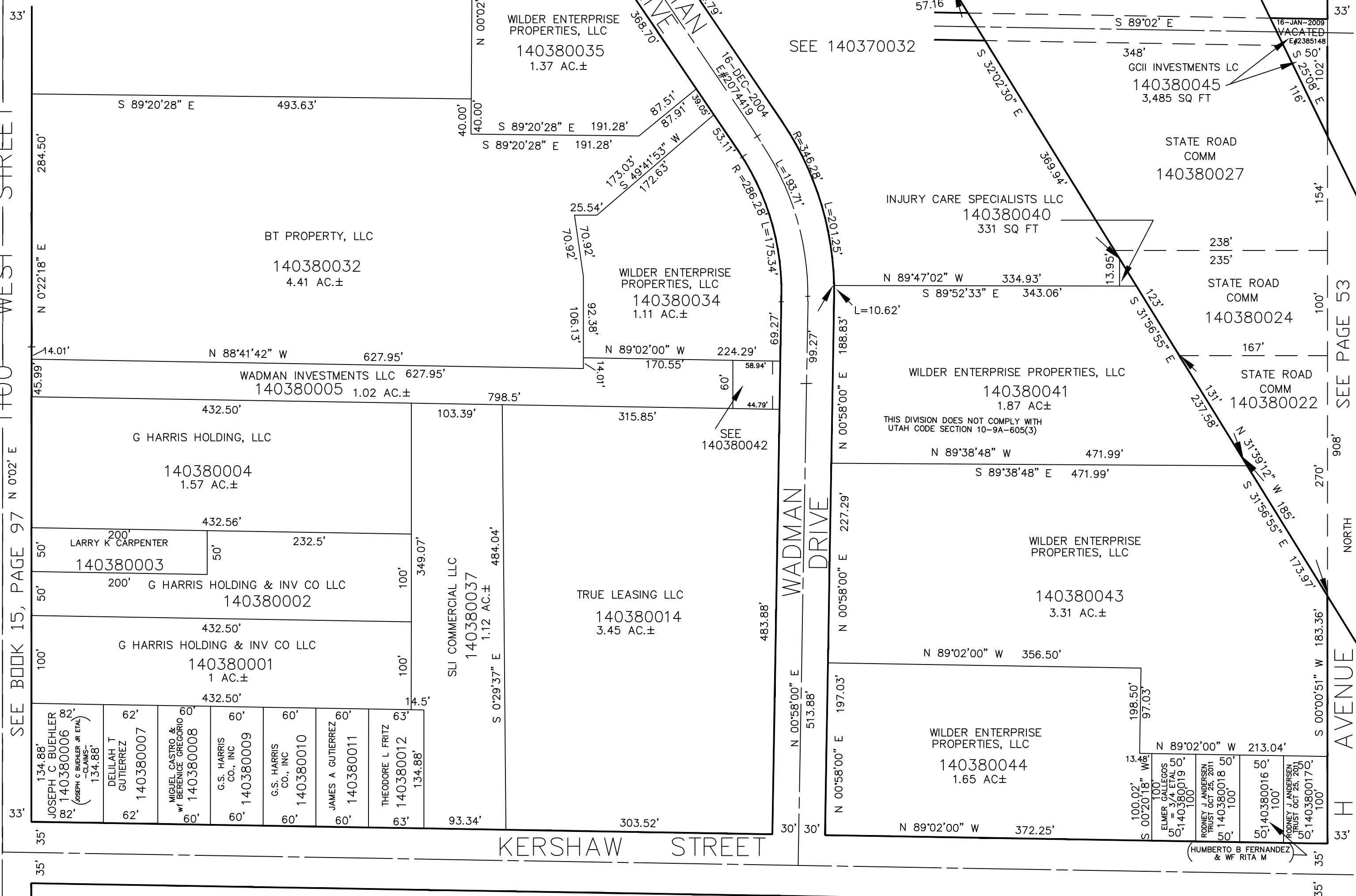
INTERSTATE NO. 15

SEE PAGE 53

NORTH

AVENUE 53

SEE BOOK 15, PAGE 97 N 0°02' E



SEE PAGE 36